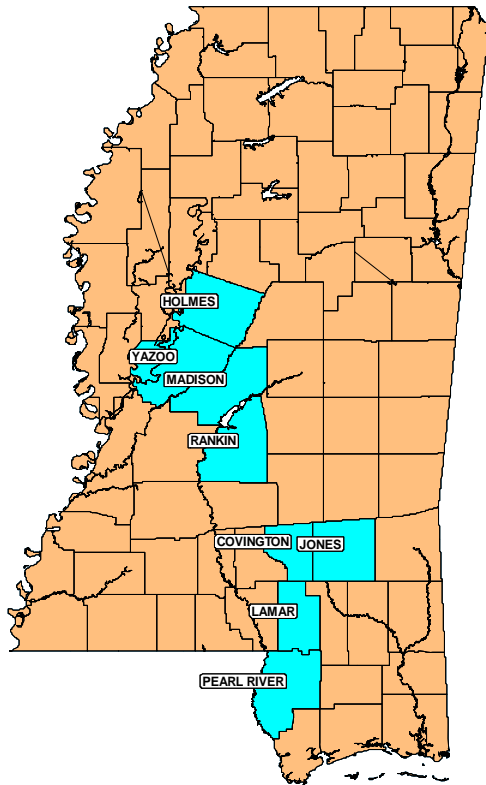


Mississippi Title IV-E Demonstration



Evaluator:
Institute of Applied Research
St. Louis, Missouri
www.iarstl.org

Phone: (314) 909-1944

Waiver

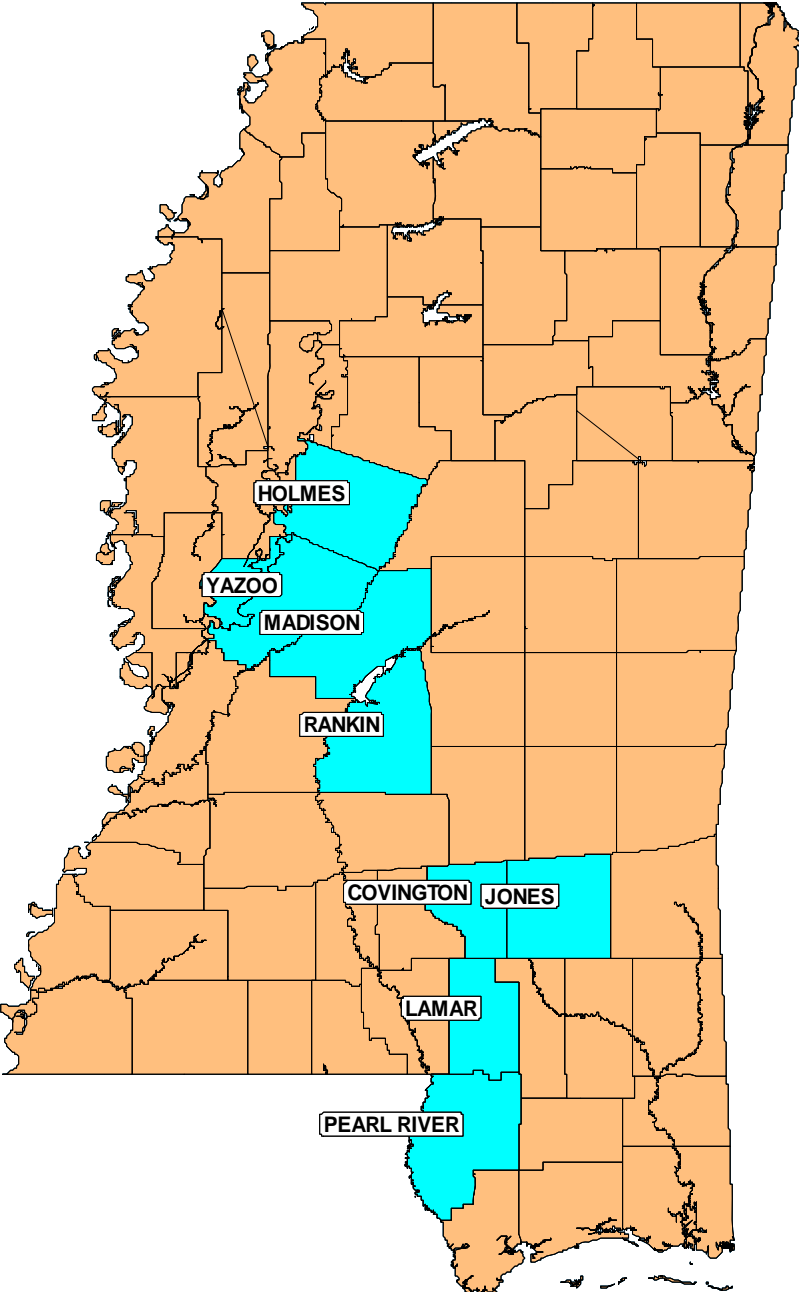
In September 1998, The Department of Health and Human Services under Section 1130 of the Social Security Act granted the state's request to operate a child welfare demonstration project in eight counties and approved waiver of the following provisions of the Act and Program Regulations:

1. Section 471(a)(3): To allow the state to conduct the demonstration on less than a statewide basis.
2. Section 472(a): To allow the state to expend title IV-E funds for children and families who are not normally eligible under Part E of title IV of the Act.
3. Section 474(a)(3)(E) and 45 CFR 1356.60(c)(3): To allow the state to expend title IV-E funds to pay for services for children and their families that would not normally be covered under Part E of title IV of the Act.

Major Project Dates

Date of waiver approval	Sep 17, 1998
Survey of service needs	Nov-Dec, 1998
Inter-agency & community planning meetings (monthly)	Oct, 1998 – Dec, 1999
Date of evaluation contract	Nov 10, 1999
Training of social workers in strengths-based planning	Jan, 2000
Second round of staff training	Apr, 2000
Submission of modifications in cost allocation plan	Aug 4, 2000
<hr/>	
Initial implementation in 2 counties	Apr 1, 2001
Implementation in 2 additional counties	Apr 1, 2002
Final approval of cost neutrality/cost allocation plan	July 2002
Implementation of waiver in final 4 counties	Oct 1, 2002
Waiver suspended	Sept 30, 2004

Participating Counties



Type of Demonstration: Intensive Services

The waiver project was designed as a response to specific findings of the 1995 ACF assessment of the state's CPS.

The plan was to use the waiver to:

Increase emphasis on child-focused, family-centered practice.

Improve the assessment of family needs.

Individualize and broaden the array of services provided to children & families.

Place more emphasis on home-based and prevention services.

Provide more support for foster parents and relative caregivers.

Key mechanism: Family Team Conferences.

What is Different about the Waiver Intervention?

Family-Team Conferences when possible

Meetings of DFCS, family members, relatives, and others to set goals, timelines, and decide about family needs

Service Flexibility

Greater latitude in:

- Types of assistance
- Assisting entire family
- Serving children who remain at home
- Serving children in alternate placement settings

Family Participation

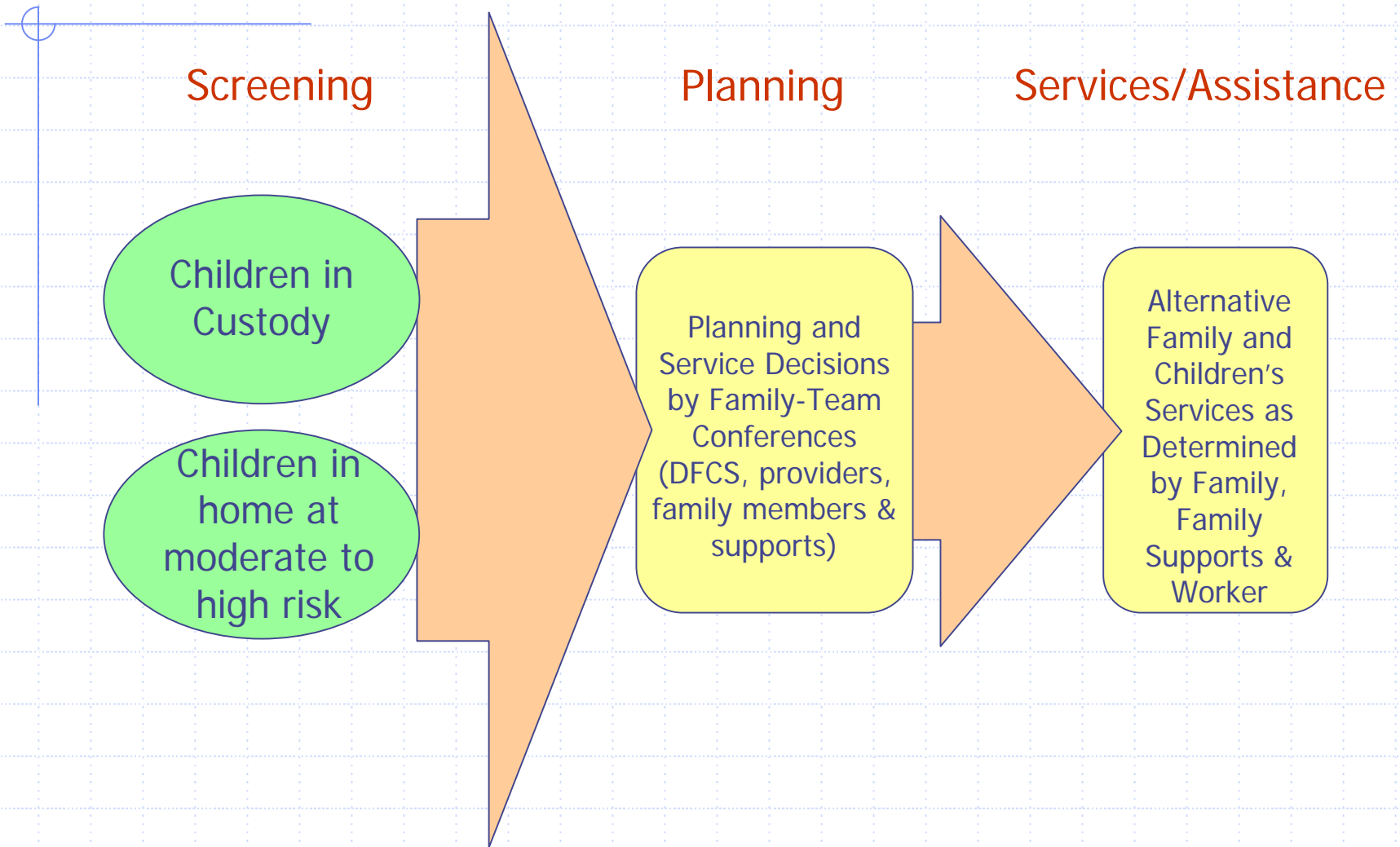
Family involvement in planning and decision-making:

- Responsibility
- Engagement
- Commitment to goals

Natural Supports

Assistance from Relatives and others in the community

What will happen in the demonstration?



Goals/Research Questions

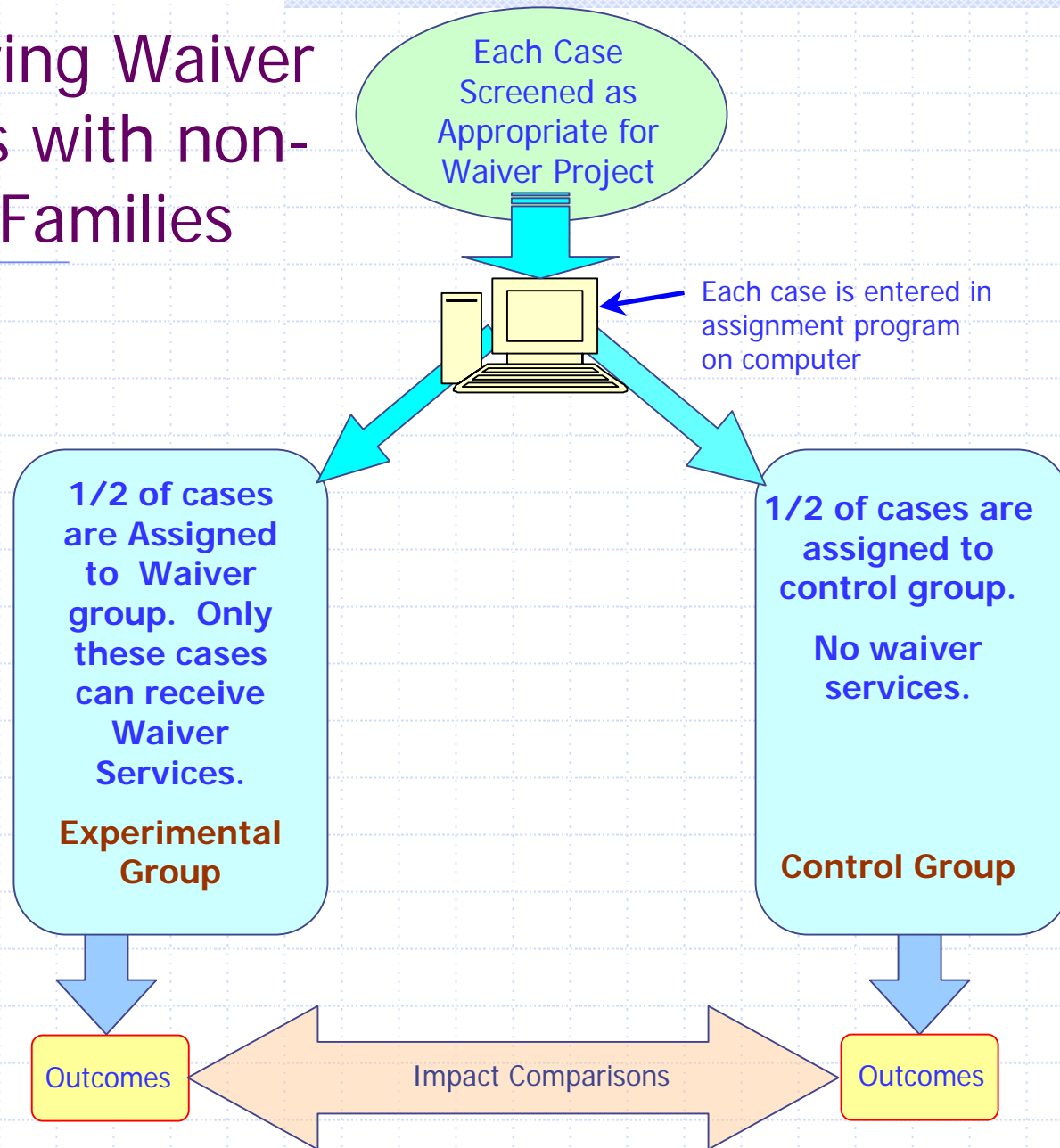
Intermediate Outcome

Increased/intensive provision of services

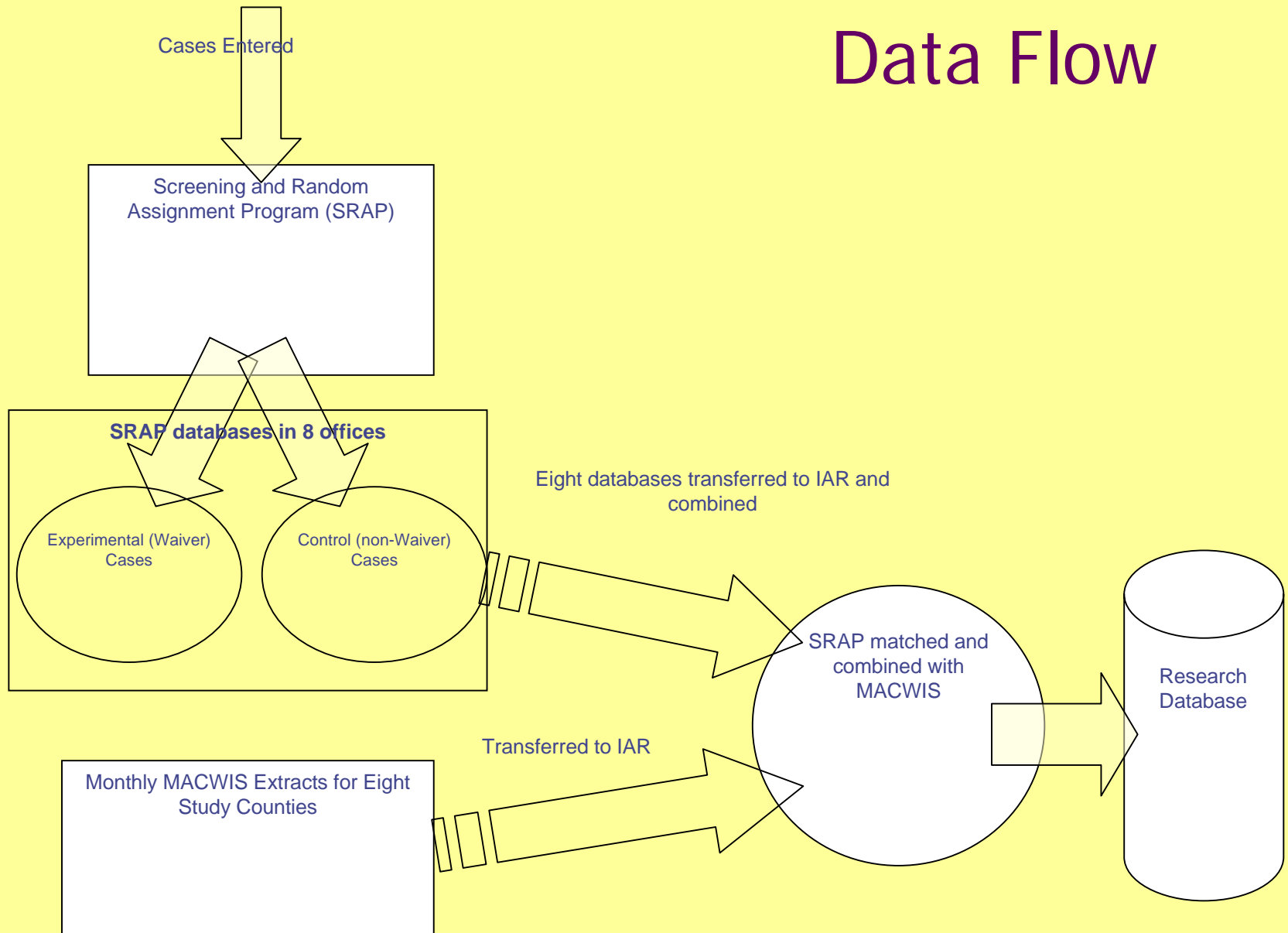
Project Goals

1. Less subsequent abuse and neglect
2. Increased family integrity
3. Reduced placements in foster care
4. Placement of children with relatives
5. Placement of siblings together
6. Placement of children near their families
7. Reduced movement among foster settings
8. Reduced time in foster care
9. Other child well-being outcomes

Comparing Waiver Families with non-Waiver Families



Data Flow



Major Challenges

1. Delays in Starting (cost neutrality/cost allocation issues)

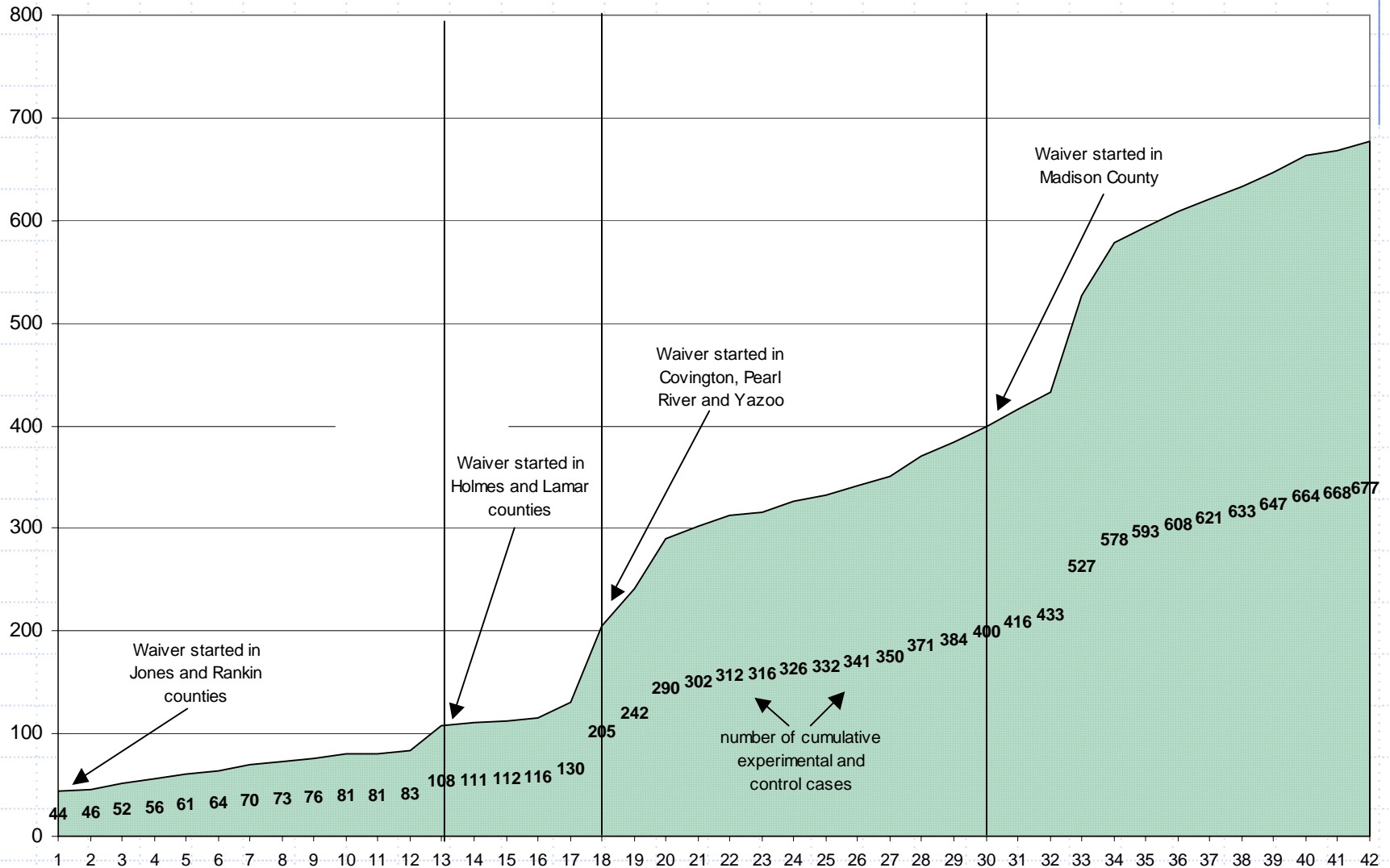
Consequences:

- a. Separation of training from implementation (by 1-2+ yrs).
- b. Overall loss of momentum.
- c. Start pushed back into economic downturn.
- d. Phased-in implementation.
- e. Contributed to staffing problems.

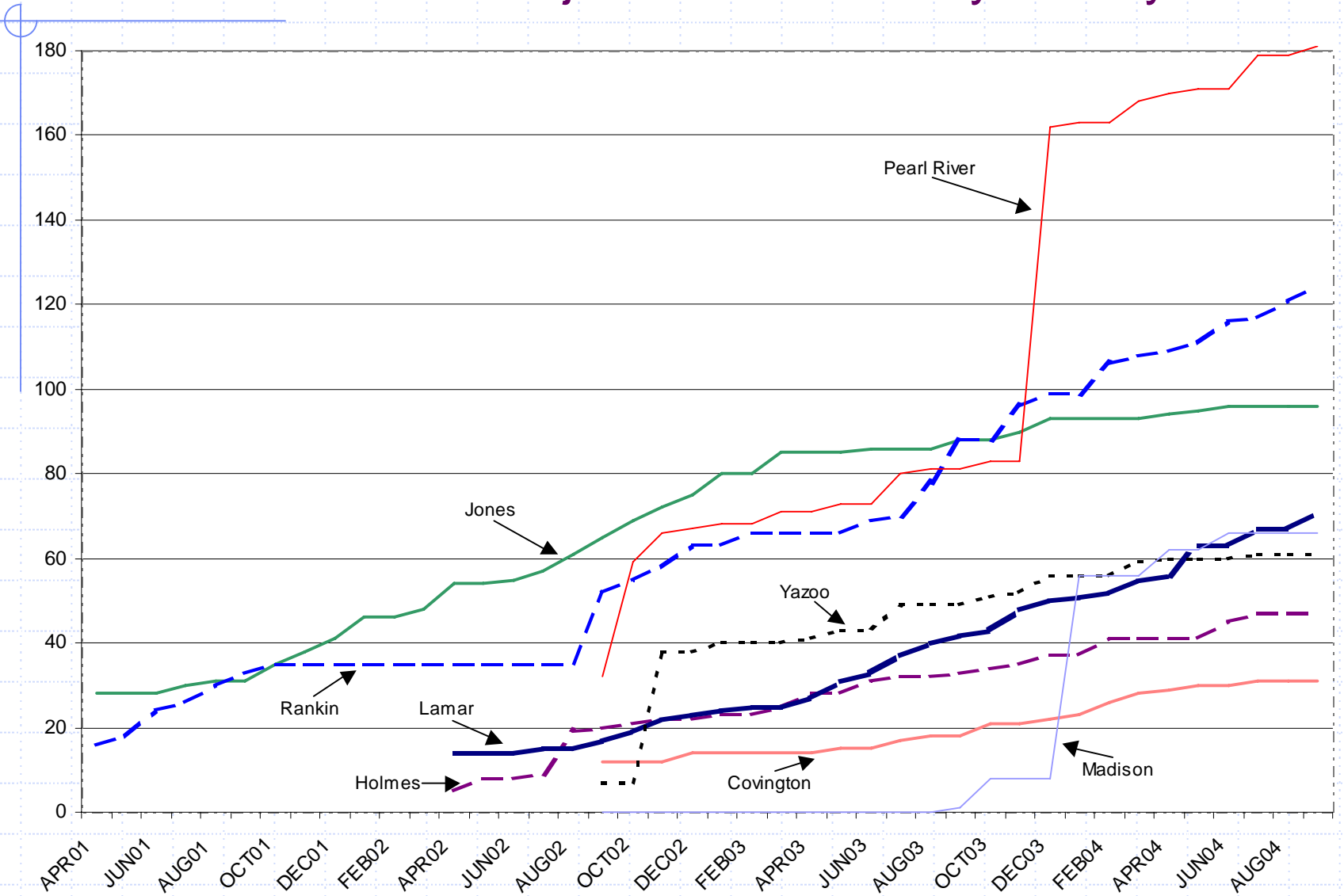
2. Staffing Problems

- a. Region 6-North administrator left during 1st year.
- b. Region 3 waiver coordinator left during 1st year.
- c. Business manager never hired.
- d. State hiring freeze started during 1st year.
 - reduced staff and rotation to other counties.
 - functional loss of 2nd waiver coordinator.
 - inability to do family team conferences.

Cumulative Number of Cases Assigned to the Demonstration Project by Project Month (Experimental and Control Cases Combined)

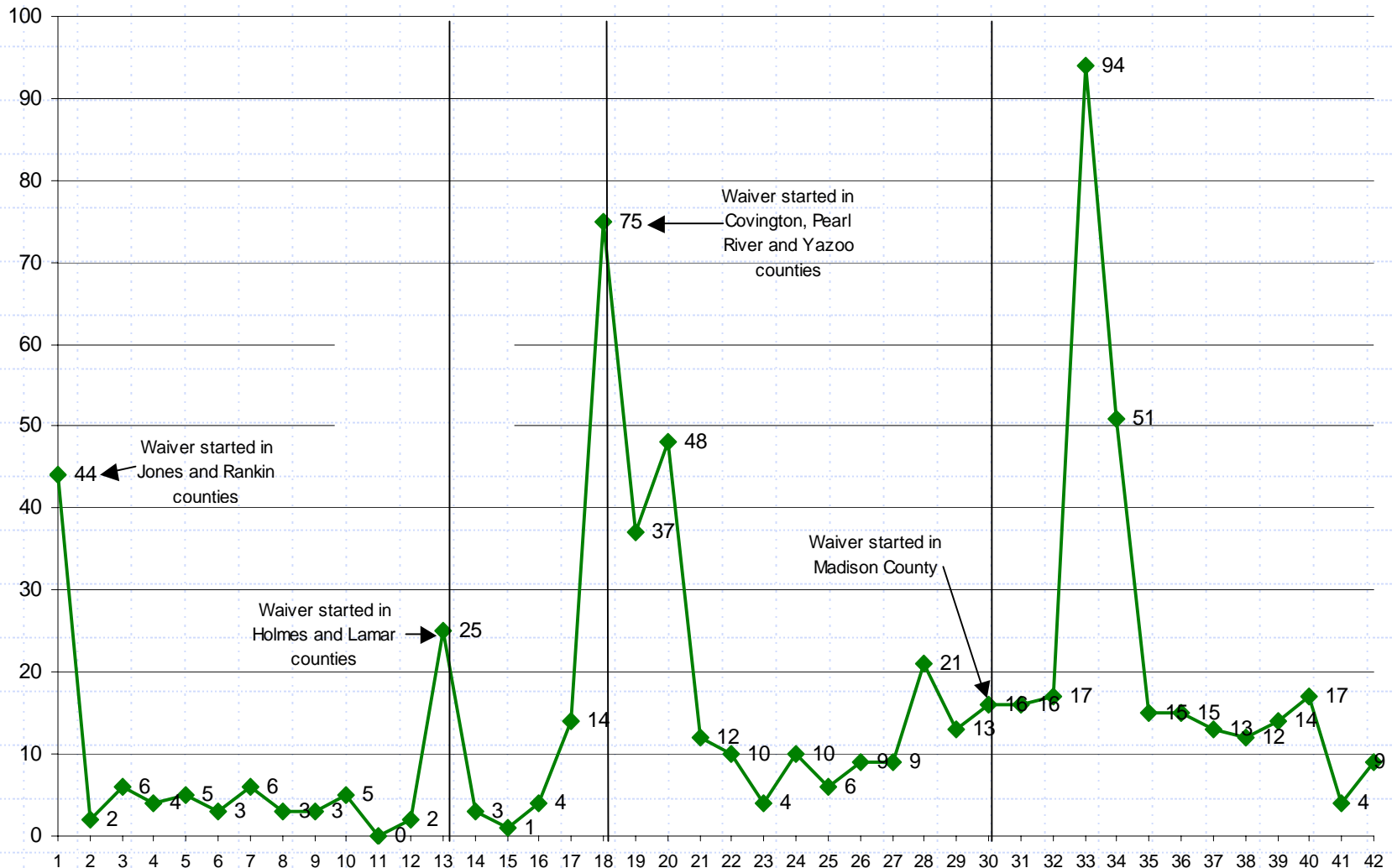


Cumulative Number of Cases Assigned to the Demonstration Project Each Month by County

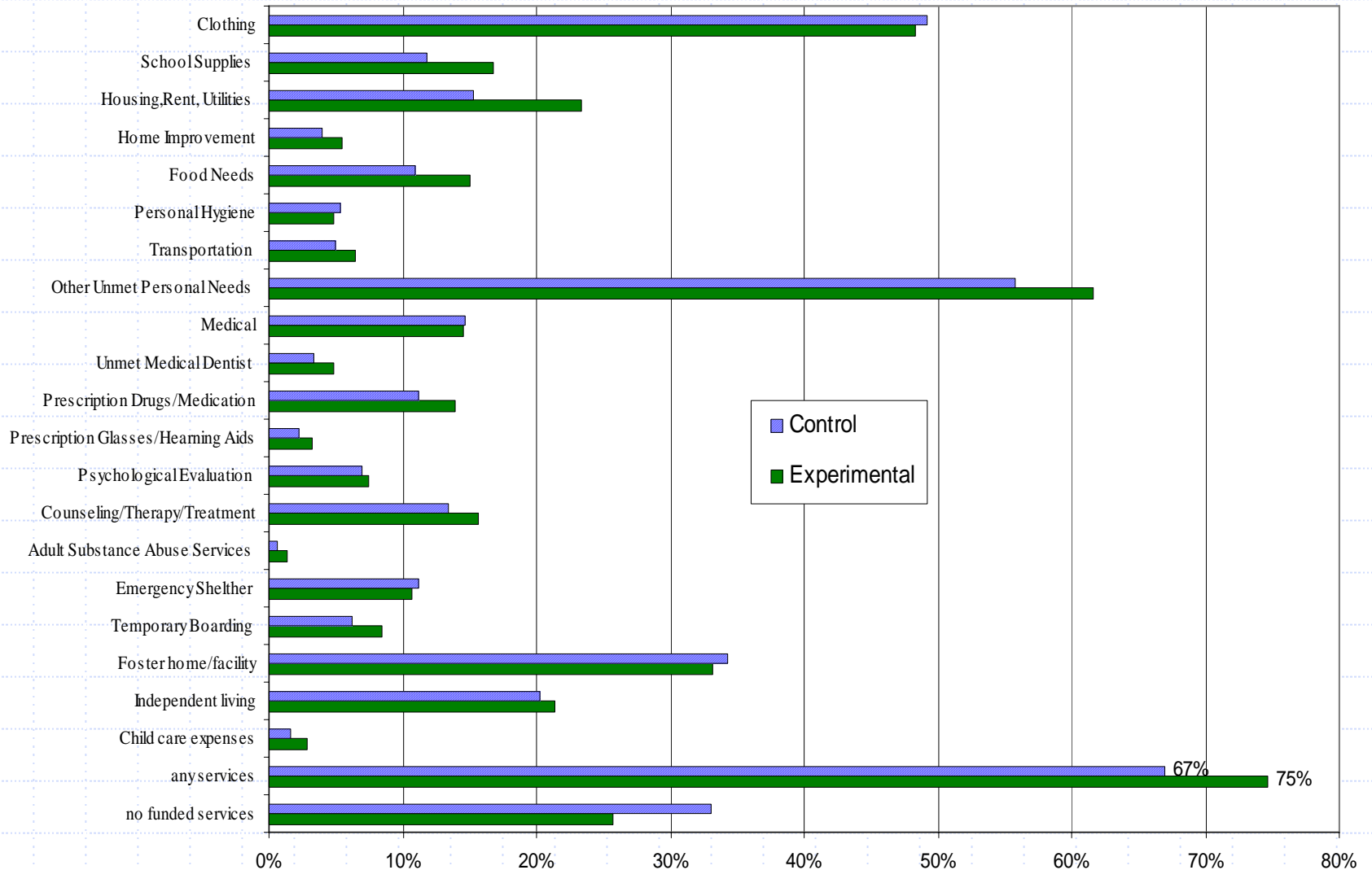


Number of Cases Assigned to the Demonstration during Each Project Month

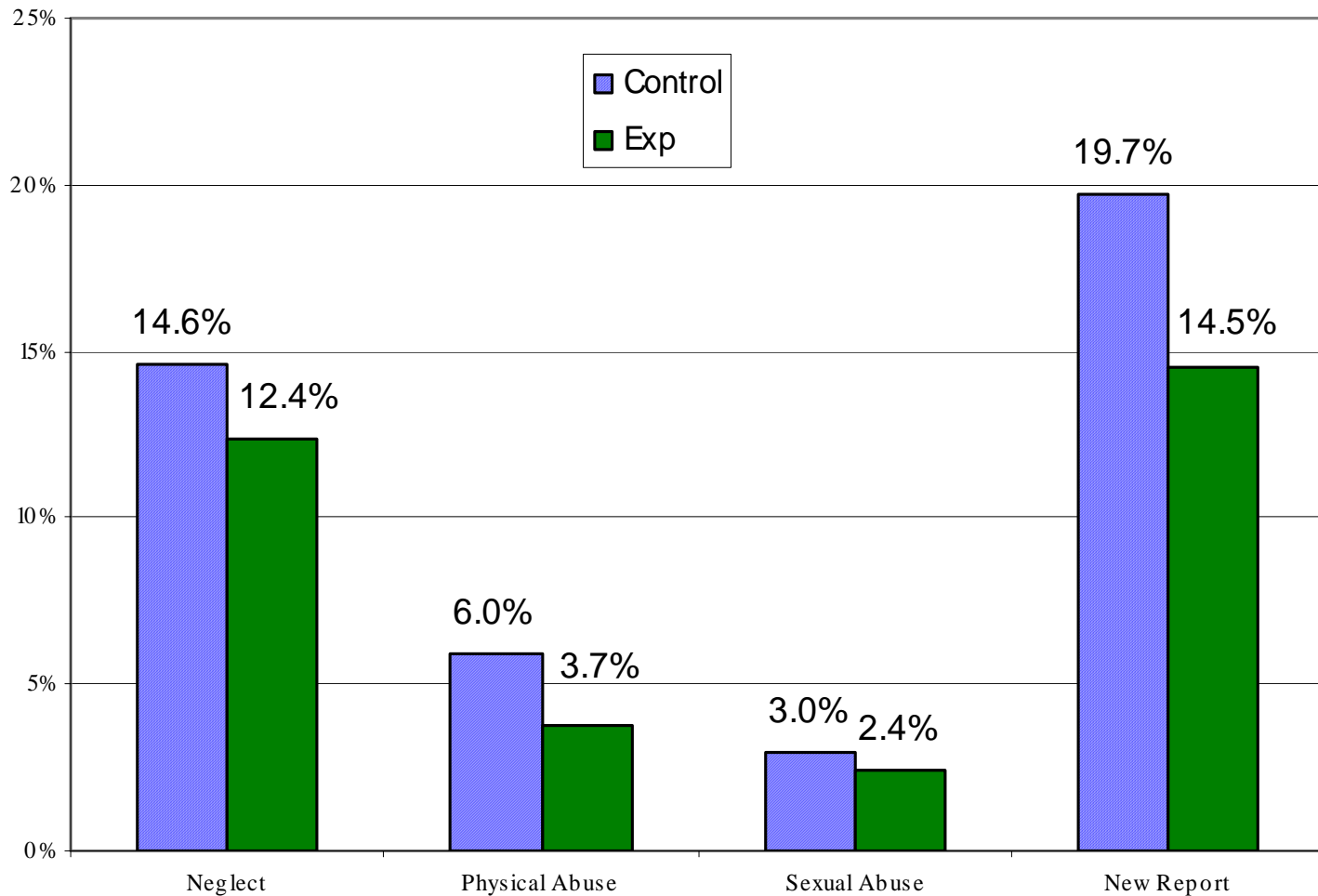
(Experimental and Control Cases Combined)



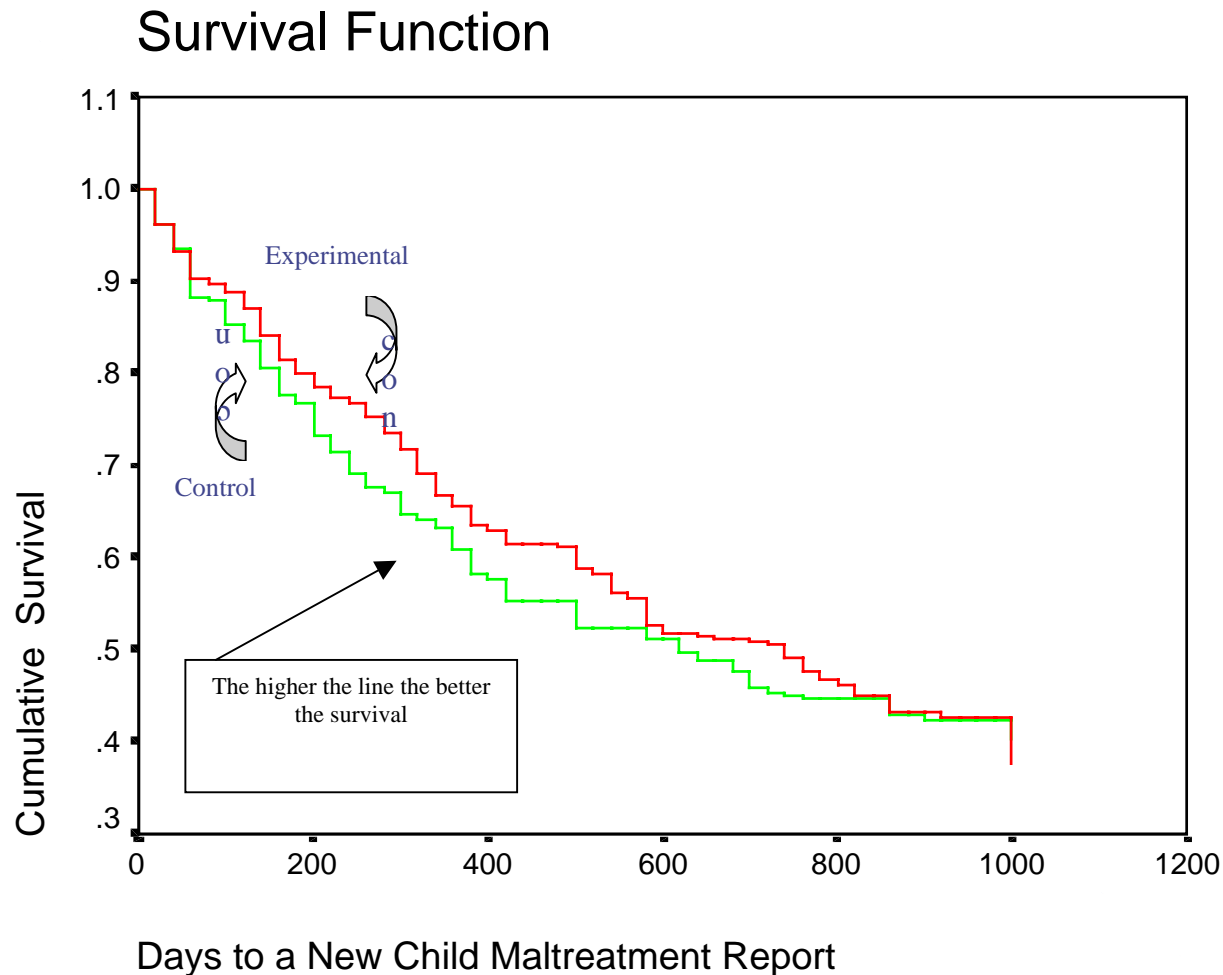
Services



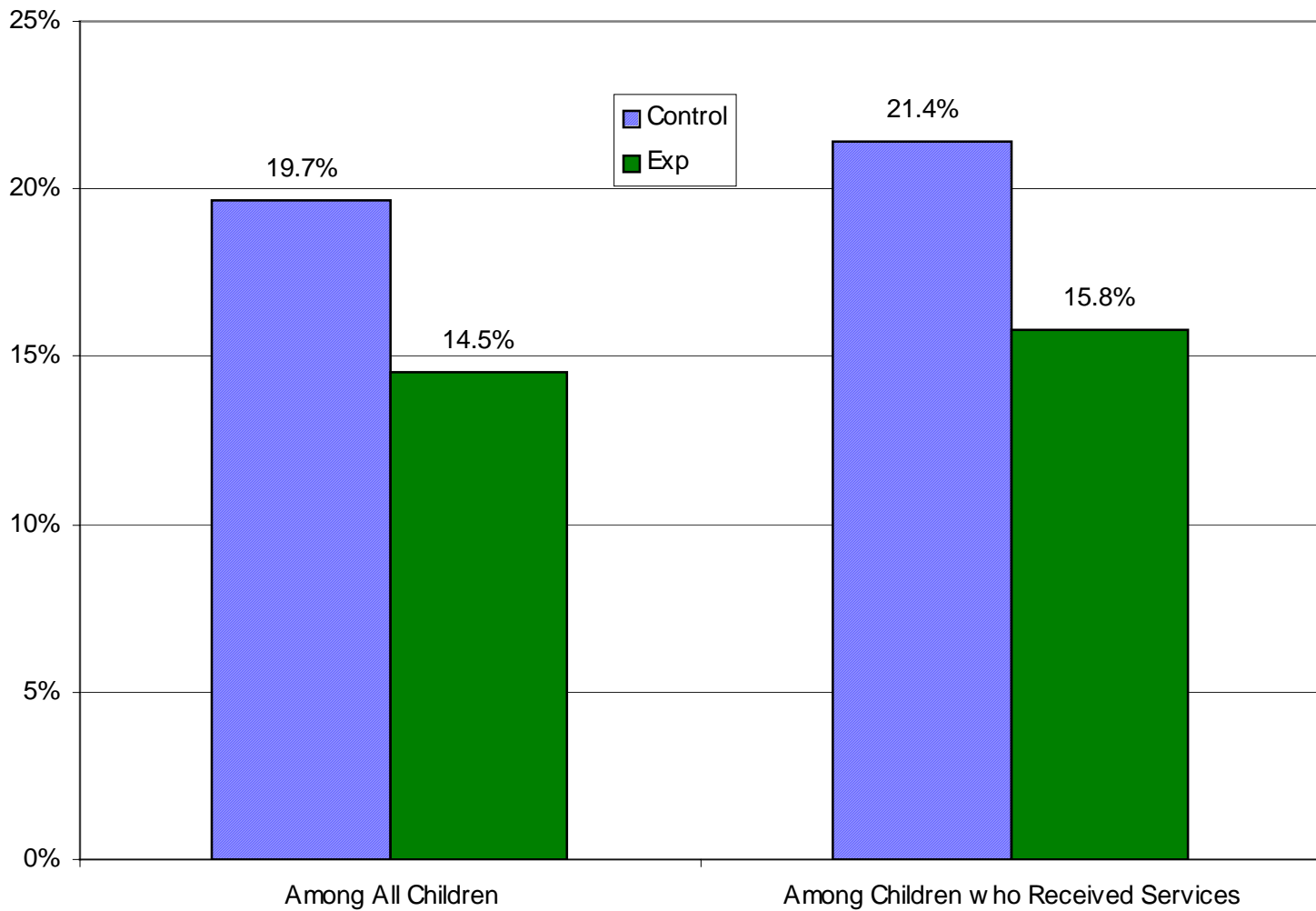
Percentage of Children with New Maltreatment Reports



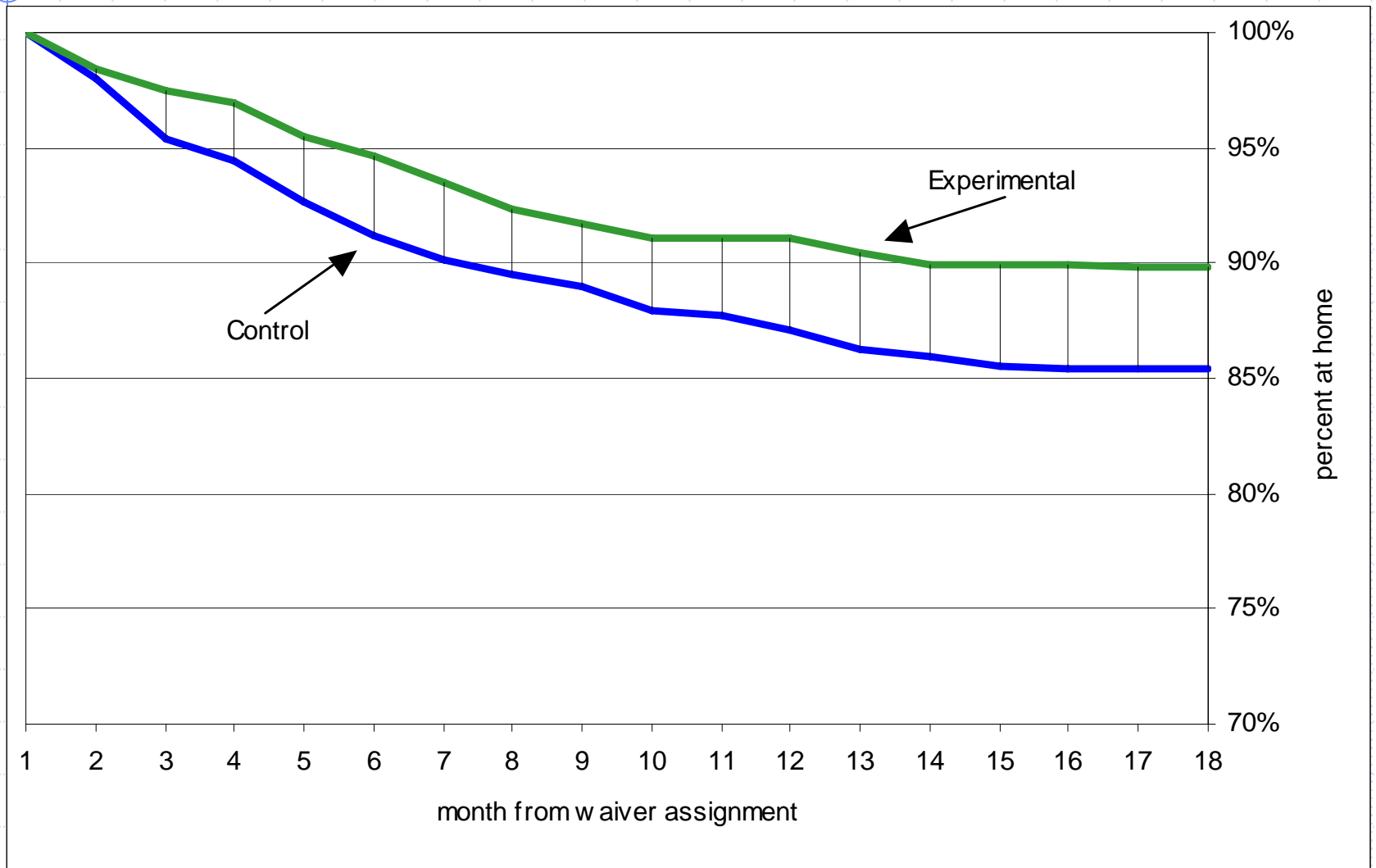
Survival of Experimental and Control Families until a New Child Maltreatment Report (20-Day Intervals)



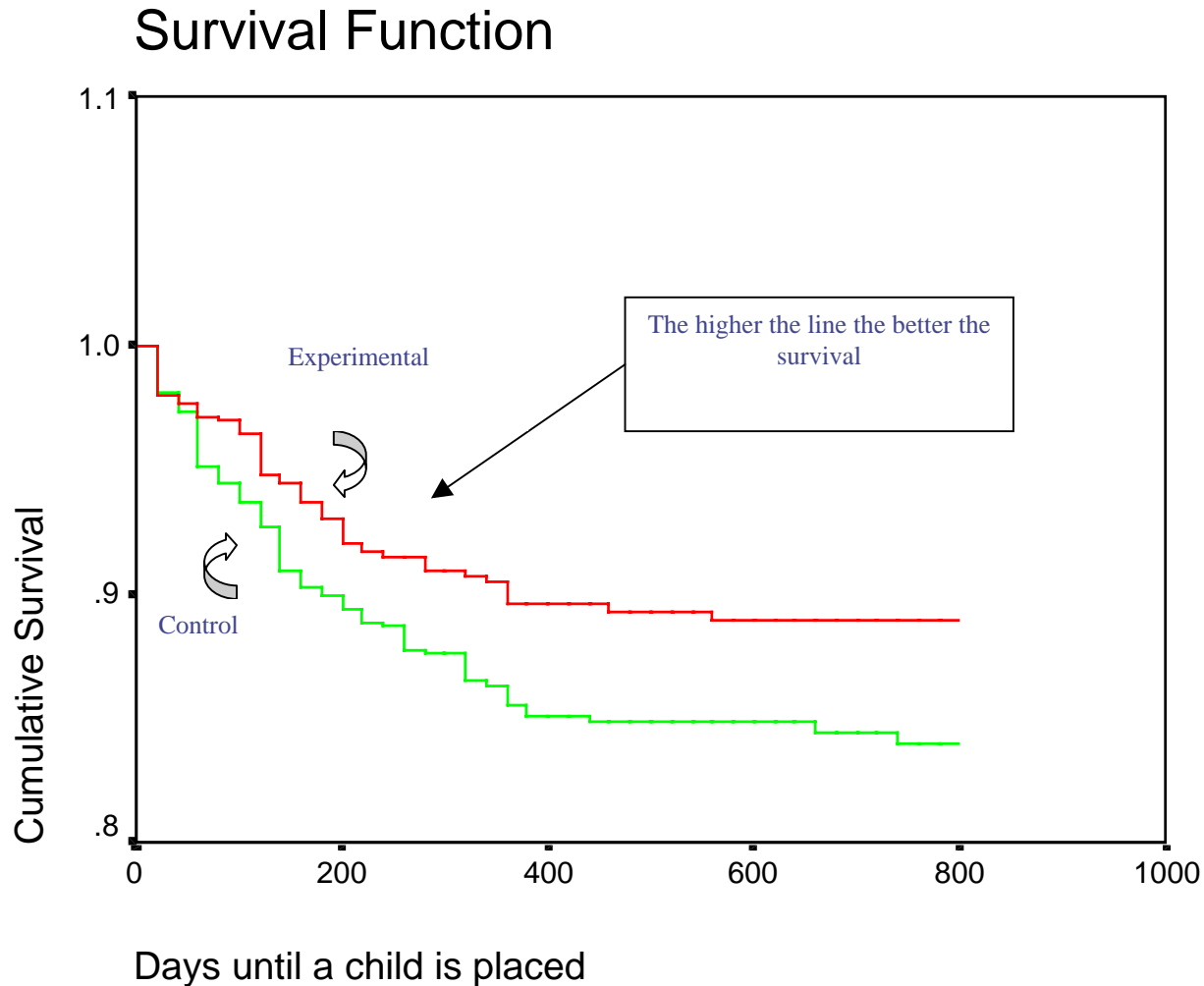
Percentage of Children with New Reports of Maltreatment



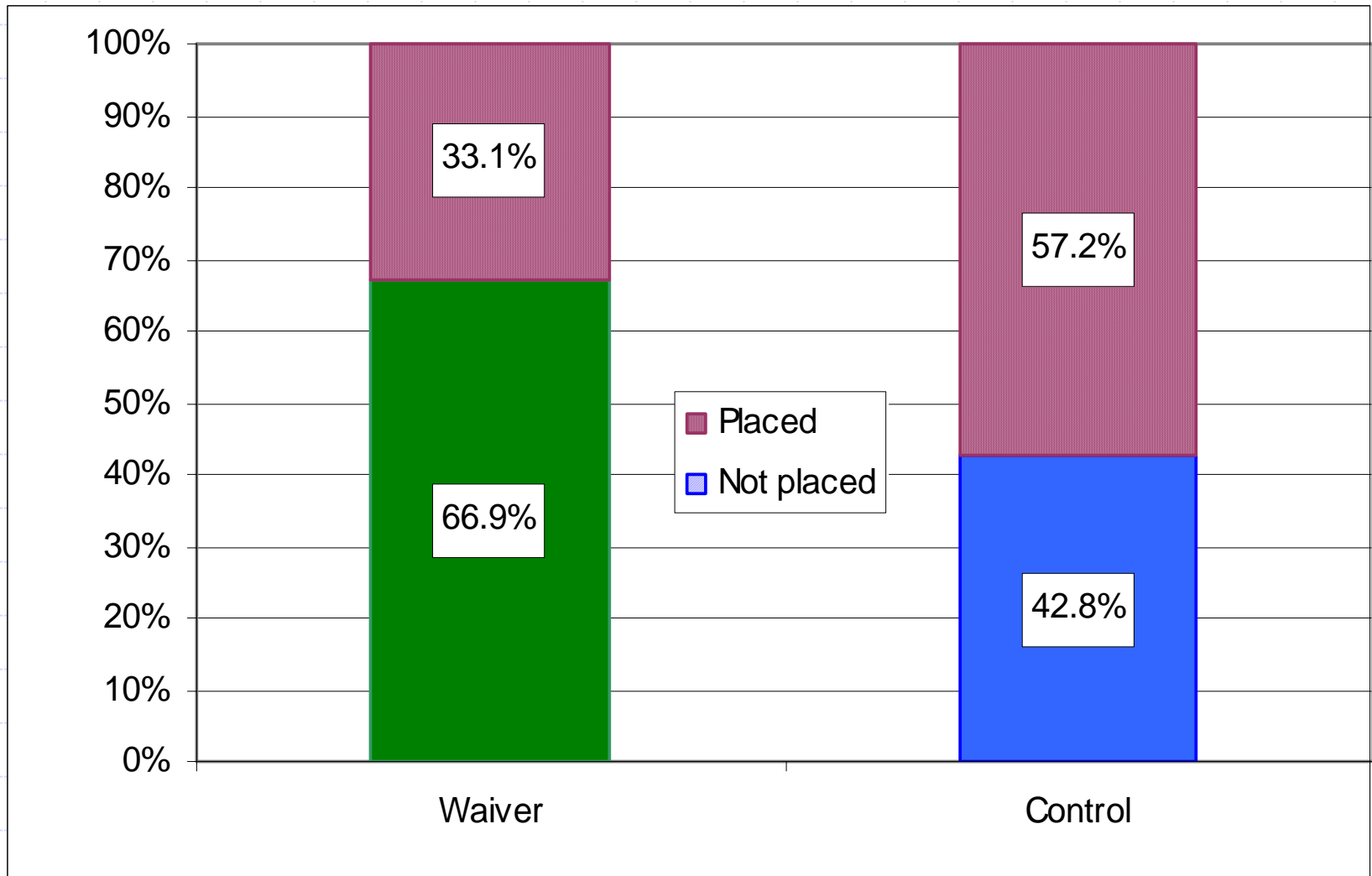
Percentage of Children who Remained in their Homes after Waiver Assignment



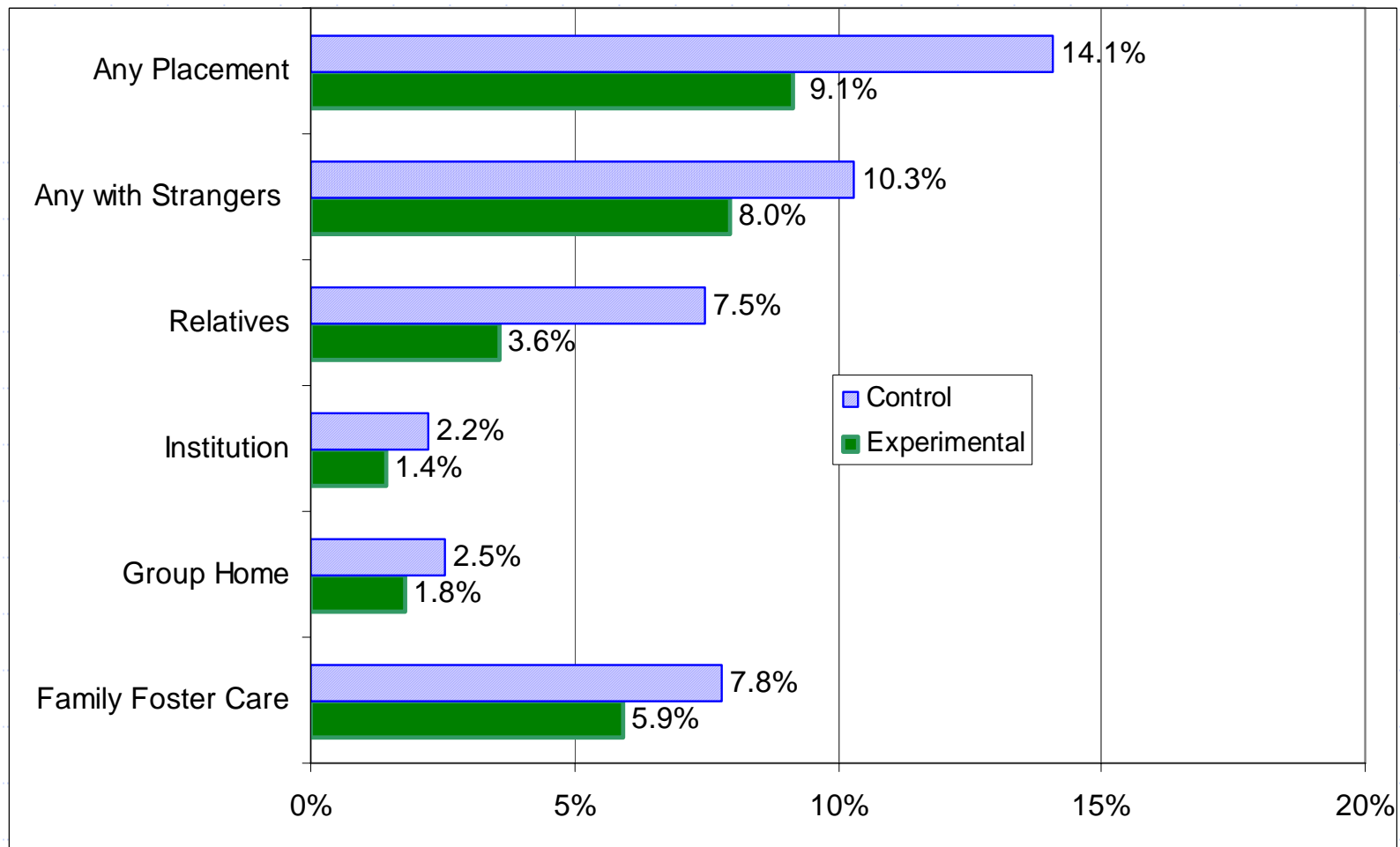
Survival of Experimental and Control Children until Out-of-Home Placement Occurs (20-day Intervals)



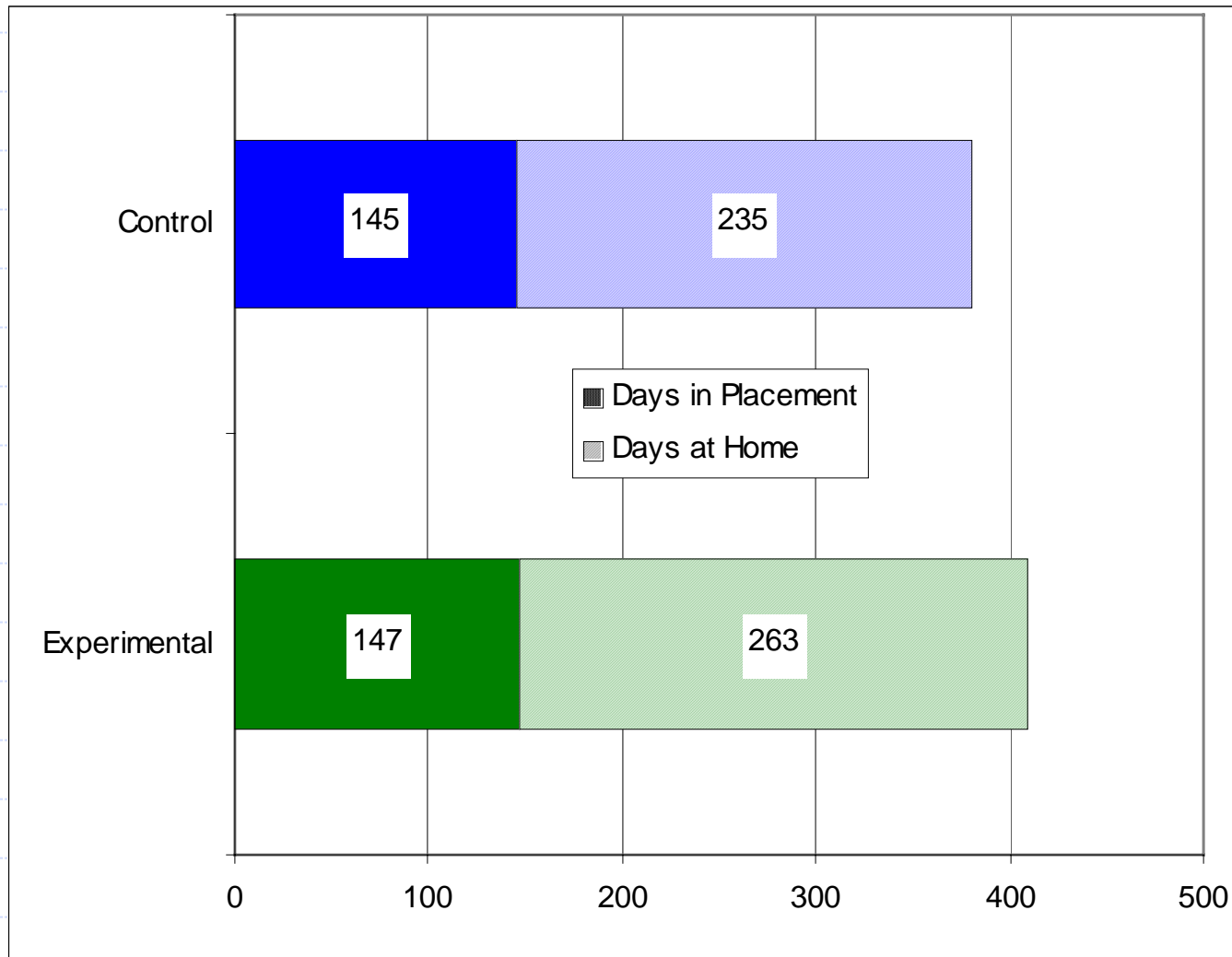
Percent of Children in Cases Receiving Services that were Placed or Not Placed Outside their Homes



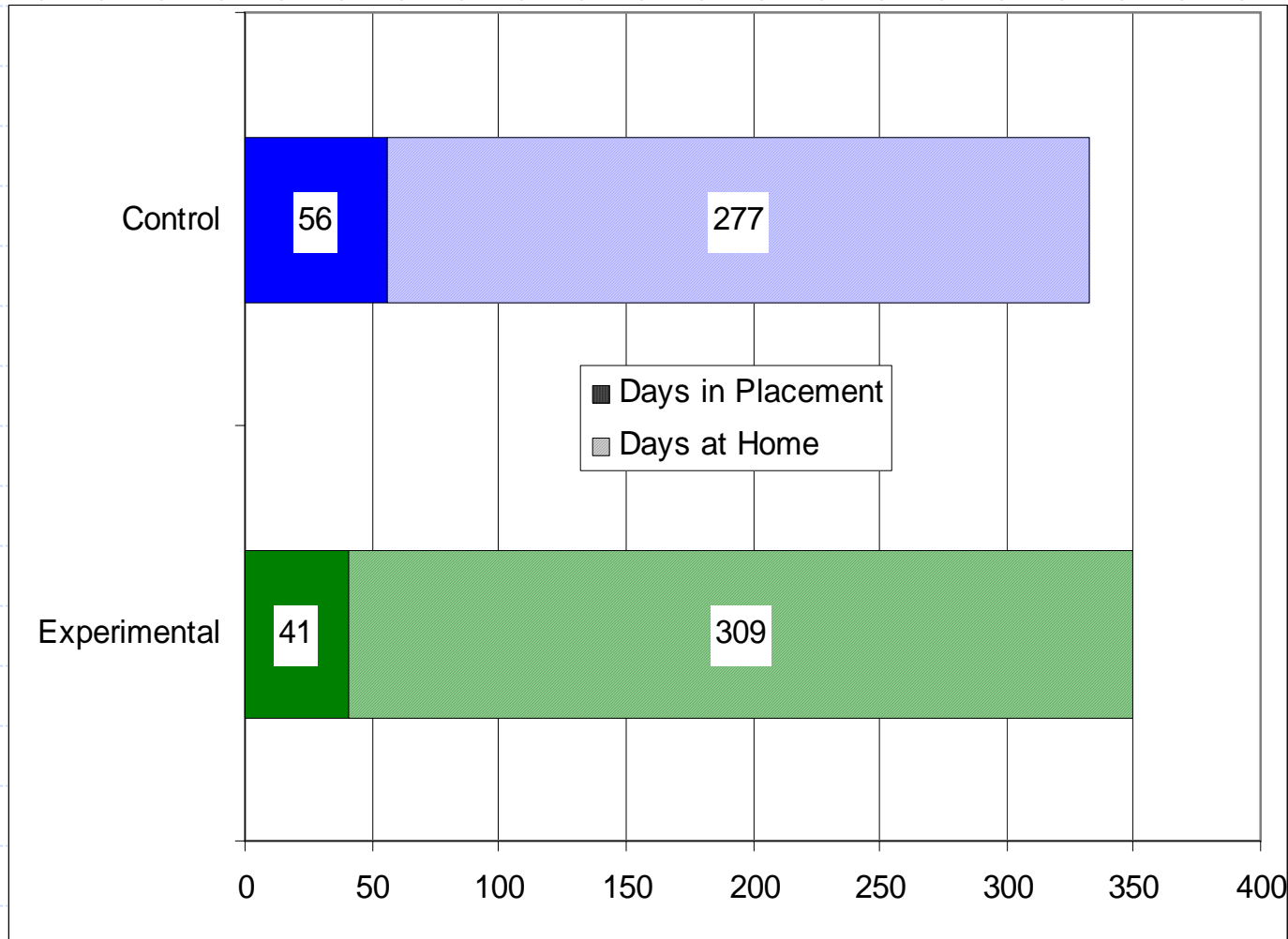
Percent of Children Placed Outside the Home in Various Foster Care Settings among Children who were in their Parental Homes at the Time of Waiver Assignment



Mean Case Days Spent in Foster Care Placement and at Home among All Children in the Study Population



Mean Case Days Spent in Foster Care Placement and at Home among Children not in Placement at Waiver Assignment



Mean Expenditures Per Case on All Services (Excluding Foster Care) by Funding Source

	Experimental Cases	Control Cases	Difference
Public Revenue Sources			
County	\$57.59	\$54.45	\$3.14
State	\$62.88	\$105.55	(\$42.67)
Regional	\$301.79	\$408.41	(\$106.62)
Family Preservation	\$26.44	\$32.66	(\$6.22)
Waiver	\$391.19	0	\$391.19
Total from public sources	\$838.90	\$607.50	\$231.40

Mean Costs Associated with Experimental and Control Cases

	<i>Period 1</i>	<i>Period 2</i>	<i>Total</i>
<i>Service Costs</i>			
Experimental			
Control			
<i>Placement Costs</i>			
Experimental			
Control			
<i>Total Costs</i>			
Experimental			
Control			

Mean Costs Associated with Experimental and Control Cases

	<i>Period 1</i>	<i>Period 2</i>	<i>Total</i>
<i>Service Costs</i>			
Experimental	839	1	840
Control	608	3	610
<i>Placement Costs</i>			
Experimental	2,710	187	2,897
Control	2,540	50	2,590
<i>Total Costs</i>			
Experimental	3,549	188	3,737
Control	3,148	53	3,200

Mean Costs Associated with Experimental and Control Cases not in Placement at Waiver Assignment

	<i>Period 1</i>	<i>Period 2</i>	<i>Total</i>
<i>Service Costs</i>			
Experimental	451	1	452
Control	329	4	334
<i>Placement Costs</i>			
Experimental	498	53	551
Control	793	34	828
<i>Total Costs</i>			
Experimental	949	54	1,003
Control	1,123	39	1,162

Costs and Case Length of Children in the Study Population (all cases)

	Experimental	Control	<i>difference</i>
Children	777	772	5
Case Days	318,452	293,912	24,540
Mean Case Days	409	380	29
Placement Costs	\$937,744	\$815,391	\$122,352
Service Costs	\$288,725	\$195,008	\$93,717
Total Costs	\$1,226,469	\$1,010,400	\$216,070
Cost per Child	\$1,578	\$1,309	\$270

It cost an average of \$270 more per child to produce a reduction of 5.2 percent in subsequent reports of maltreatment.

Costs and Case Length of Children not in Placement at Waiver Assignment

	Experimental	Control	<i>difference</i>
Children	488	495	-7
Case Days	152,780	146,689	6,091
Mean Case Days	313	296	17
Placement Costs	\$107,619	\$158,690	(\$51,071)
Service Costs	\$95,888	\$65,895	\$29,993
Total Costs	\$203,507	\$224,585	(\$21,078)
Service Cost per Child	\$196	\$133	\$63
Placement Cost per Child	\$221	\$321	(\$100)
Total Cost per Child	\$417	\$454	(\$37)

It cost an average of \$37 less per child to produce a reduction of 5.0 percent in placement in foster care.

Cost Neutrality Formula

The criteria for selecting cases for the waiver was based on the level of risk to the child and the child's custody status. However, IV-E eligibility was not considered. This was not expected to be a problem. But it was.

Poverty Level Indicators

	state rank in 2000
Percent of Children in Poverty	1
Percent of Families in Poverty	1
Households Headed by Single Women	1
Median Household Income	47

IV-E Penetration Rate

Percent of foster care cases eligible for IV-E	state rank
2000	42
2001	46
2002	48

Penetration Rate

	percent IVE eligible
1999	31%
2000	31%
2001	26%
2002	19%

Sliding Scale/Slippery Slope

Control children determined to be IV-E eligible	Average cost of control cases	Amount available for waiver cases
100%	\$1,000	\$1,000
90%	\$1,000	\$900
80%	\$1,000	\$800
70%	\$1,000	\$700
60%	\$1,000	\$600
50%	\$1,000	\$500
40%	\$1,000	\$400
30%	\$1,000	\$300
20%	\$1,000	\$200
10%	\$1,000	\$100

What If?

The Question:

Would lower recidivism and fewer placements have offset longer case length and higher admin costs?

Or, was the decision to exclude IV-E eligibility from screening criteria a fatal flaw?

Mississippi Title IV-E Demonstration

Evaluator:

Institute of Applied Research

St. Louis, Missouri

www.iarstl.org

Gary Siegel

Tony Loman

Phone: (314) 909-1944